

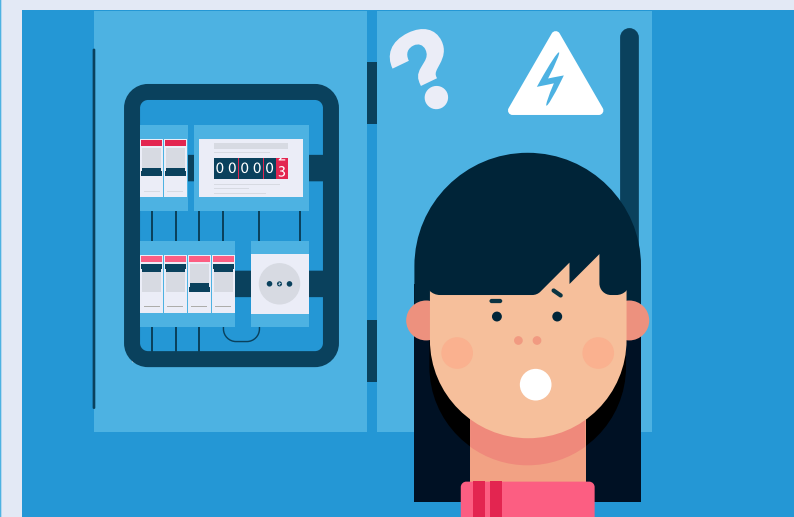
## How does electric cooking work?

Induction cooking is increasingly popular. An induction hob is powered by electricity, meaning you won't need gas to cook. It's easy to adapt the temperature quickly, the hob doesn't get as hot and there's no open flame to worry about. Besides, induction hobs are easier to clean.



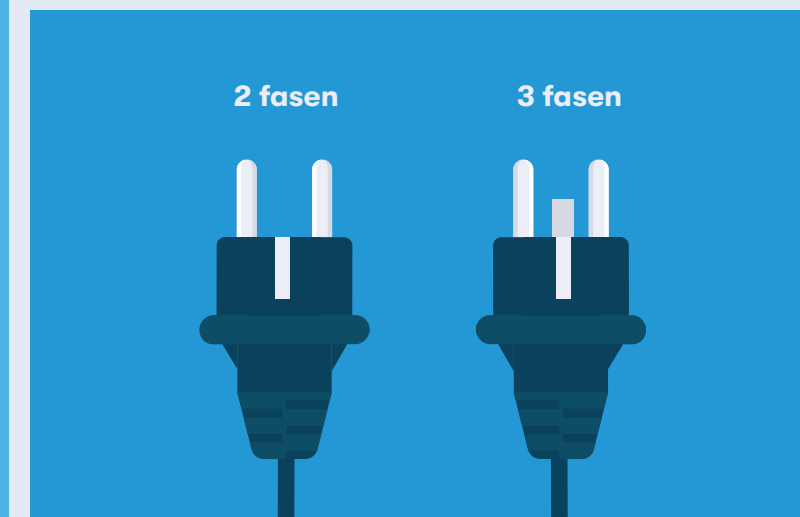
# How can I cook electric?

## Is my home suitable?



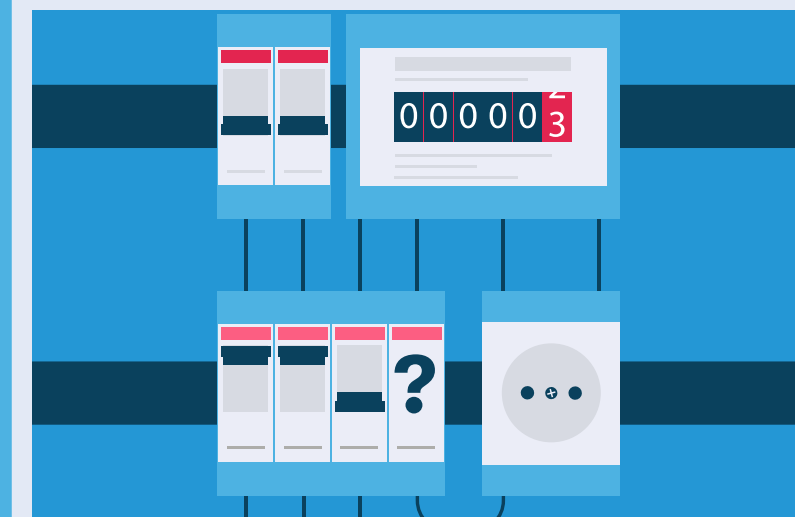
Yes, it is!  
Do you wish to install an induction hob?  
Contact Nijestee at: **+31 (0)50 853 35 33**

## What type of hob should you install?



This will depend on your home's power supply:  
\* 2-phase power supply: you can use a hob up to 7,500 W.  
\* 3-phase power supply: you can use a hob up to 11,000 W.

## Additional power necessary?



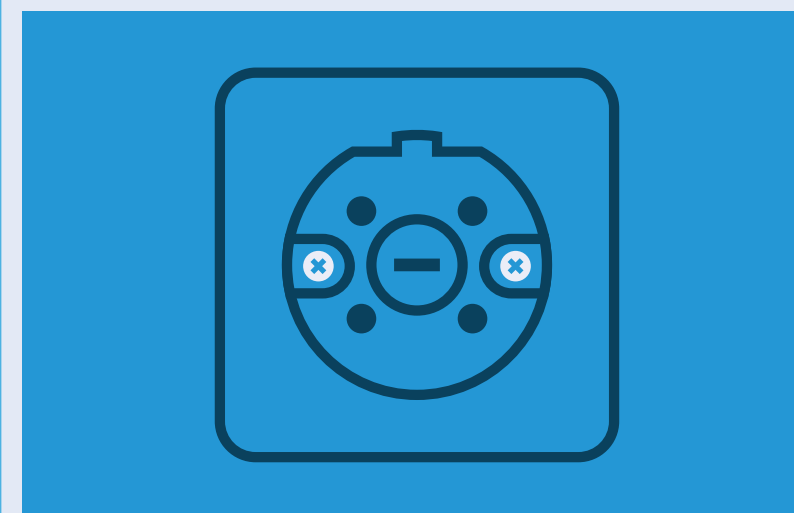
Possibly.  
Many electric hobs have a Perilex plug. Such hobs require more power than a standard outlet can supply. This means you will need to add an additional dedicated power circuit if you don't have one already.

## What will the installation involve?



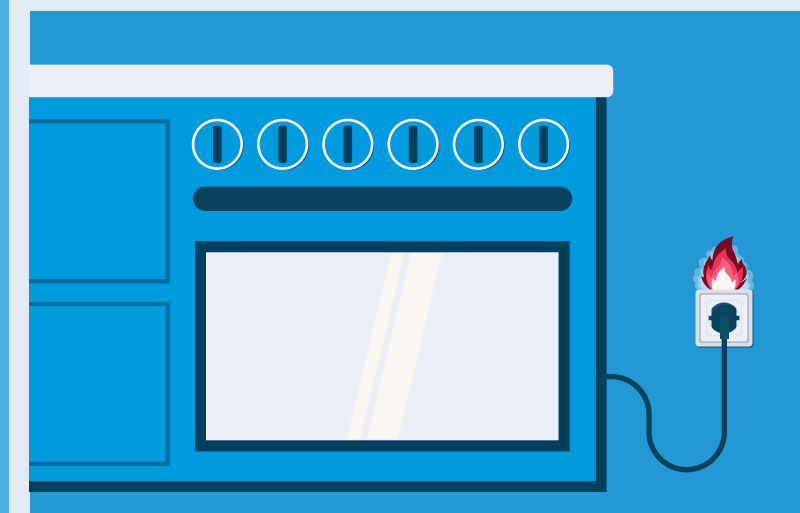
We can add two additional power circuits to your meter box and a Perilex-outlet in your kitchen. We can also extend your countertop at a cost of € 2.25 per cm.

## What does a Perilex outlet look like?



A Perilex outlet has five holes instead of the usual two. The plug will have four round pins and one flat one.

## What happens if I use the wrong outlet?



**BEWARE:** This can cause a short circuit or damage your hob. You must pay the cost of such damages yourself.

To avoid damage, we advise having a qualified technician install your new hob.

## Are there costs involved?



Yes.  
Your rent will go up by € 3.50 per month to pay for the two additional circuits in the meter box and the Perilex outlet in the kitchen.

## A malfunctioning or questions?



Definitely don't mess with the wiring in the meter box yourself. Instead, contact Nijestee at:

**+31 (0)50 853 35 33**

You can also consult the frequently asked questions on our website.